

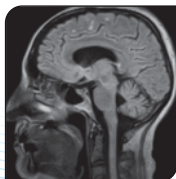


Seal of Trust

The natural choice for Refurbished Imaging Equipments

The Philips INTERA SUPERCON MRI high field scanner features a revolutionary ultra-compact magnet, excellent image quality and a wide, open, patient-friendly design. With the Philips INTERA SUPERCON MRI high field scanner, enjoy high levels of customizability to perform exams any way you want. What's more the SENSE (coil SENSitivity Encoding) technology in all Philips MRI's increases unparalleled scanning speed. The Intera-family offers with this mid field system, maximum efficiency, flexibility and performance.

**Trademarks are owned by the respective manufacturers*



TOLLFREE: 1800-419-0247

Technical Specifications

| | |
|----------------------|---|
| Clinical Application | Whole body |
| Configuration | Short bore compact |
| Synchronization | Respiratory gating |
| Pulse Sequences | SE, Modified-SE, IR (T1, T2, PD), STIR, FLAIR, SPIR, FFE, T1-FFE, T2-FFE, Balanced FFE, TFE, Balanced TFE, Dynamic, Keyhole, 3D, Multi Chunk 3D, Multi Stack 3D, K Space Shutter, MTC, TSE, Dual IR, Drive, EPI, Cine 2DMSS, DAVE, Mixed Mode; Angiography: Inflow MRA, TONE, PCA, CE MRA |
| Imaging Modes | Single Slice 2D, Multi Single Slice 2D, Multi Slice 2D, 3D, Multi Chunk 3D, Multi Stack 3D |
| TR | Min. 2.9 (Omni) msec |
| TE | Min. 1.0 (Omni) msec |
| Single/Multi Slice | RapidView Recon. greater than 500 @ 256 Matrix |
| FOV | Max. 53 cm |
| Slice Thickness | 0.1 mm(Omni) |
| Display Matrix | 128 X 128, 256 X 256, 512 X 512, 1024 X 1024 (64 for Bold Image) |
| Measuring Matrix | Variable in 1% increments |
| Pixel Intensity | Lum.: 120 cd/m ² ; contrast: 150:1 |
| Spatial Resolution | Variable (op. param. depend.) |
| Magnet Type | Superconducting |
| Bore Diameter | 60 x 60 cm |
| Magnet Weight | 2700 kg |
| Cryogen Use | 0.03 L/hr helium* |
| Field Strength | 1.0 T |
| Strength | 23 mT/m (Omni) |
| 5-Gauss Fringe Field | 2.3 m / 3.3 m |
| Shimming | Passive and dynamic |
| Surface Coils | 6 numbers covering all applications |



*At ideal conditions

The specifications are mentioned as guideline only

Contact our sales team today



TOLLFREE: 1800-419-0247

CURA[®]
www.cura.in

CURA Healthcare Pvt. Ltd.: #22 P.K. 3rd Cross Road, SIDCO Industrial Estate, Ekkaduthangal, Chennai-600032, India.

Ph: +91 - 44 - 6679 2600 / 4214 5777 Fax: +91 - 44 - 4214 5444 | Email: cura@cura.in | www.cura.in

India Operations : Ahmedabad | Bhopal | Bhubaneswar | Bangalore | Calicut | Cochin | Chandigarh | Chennai | Coimbatore | Guwahati | Hyderabad | Jaipur | Kolkata
Lucknow | Madurai | Mumbai | New Delhi | Nagpur | Pune | Patna | Vijayawada. **Overseas Operations :** Asia Pacific | Middle East | European Union | Africa | USA